



**Wooburn & Bourne End Parish Council
Neighbourhood Development Plan 5th Draft
Appendices 1, 2 and 3.**

Appendix 1: Comparison of Community Led Plans actions and recommendations.

Pages 1 to 4.

Appendix 2: Parish Statistics

Pages 5 to 11.

Appendix 3: Examples of Wooburn Green & Bourne End Parking issues

Page 12.

Wooburn & Bourne End Parish Council
Neighbourhood Development Plan 5th Draft
Appendix 1.

Comparison of Community Led Plans actions and recommendations.

Wooburn and Bourne End completed Community led plans in June 2014 and November 2012 respectively. The following summarises the recommendations of each community as stated in their plan. The plans have objectives which have a high degree of overlap and common themes.

Neither plan prioritised actions or recommendations.

Table comparing the two Community Plan Recommendations/Actions

Bourne End Community Plan (BECP)	Wooburn Community Plan (WCP)
Transport (BECP 1)	Transport and Parking (WCP 1)
1.1. Improve bus and railway timetables (BECP 1.1.1)	1.1. Review possibility of shuttle bus service to Beaconsfield (WCP 1.1)
1.2. improve bus access to Marlow (BECP1. 1.2)	1.2. Make representations to BCC to improve road maintenance and road safety around the Green and Pedestrian crossings (WCP 1.2)
1.3. Review with authorities all aspects of traffic to find solutions to reduce volumes of vehicles using the village as a thoroughfare (BECP 1.1.3)	1.3. Enforce Parking restrictions and speed limits (WCP 1.3)
1.4. Recommend there should be free one-hour parking in Wakeman Road car park (BECP 1.1.4)	1.4. Dialogue with Schools to improve Parking (WCP 1.4)
1.5. Clarify the law on weight restrictions on Cookham Bridge and have it policed (BECP 1.1.5)	
1. 1.6. Discuss with Sustrans recommendation to promote safe cycle paths throughout Bourne End and to neighbouring villages (BECP 1.1.6)	

Bourne End Community Plan (BECP)	Wooburn Community Plan (WCP)
Community (BECP 2)	Community (WCP 2)
2.1. Work with local clubs and organisations to Improve community spirit through local initiatives (none specified) (BECP 2.1.)	2.1. Investigate provision of more facilities for young and elderly (WCP 2.1)
2.2. Support Wye Valley Volunteers (BECP 2.2)	2.2. Set up Good Neighbours Group (WCP 2.2)
2.3. Explore possibility of evening classes (BECP 2.3)	2.3. Open dialogue with Wooburn Club to see to what extent their facilities could be used by the wider community (WCP 2.3)
2.4. Ensure local facilities (specifically those paid for by the Village and lottery money, such as library and day care centre) are not withdrawn (BECP 2.4)	
Retail and Economy (BECP 3)	Economy (WCP 3)
3.1. Protect and maintain diverse range of shops (BECP 3.1)	3.1. Monitor planning applications to ensure existing retail/ office space utilized before further development and limit multiples taking commercial space (WCP 3.1)
3.2. Encourage improvement in appearance of the Village including the Parade – facelift suggested (BECP 3.2)	3.2. Encourage more local business and investigate introduction of Farmer’s market (WCP 3.2)
3.3. The Community should work together with the business community to preserve and enhance the retail and business structure which are fundamental to the fabric of the Village (BECP 3.3)	

Bourne End Community Plan (BECP)	Wooburn Community Plan (WCP)
Policing (BECP 4)	Policing (WCP 4)
4.1. Concern over Police presence (lack of) and feeling that crimes are not followed up (BECP 4.1.)	4.1. Discuss concerns about anti-social behaviour and enforcement of speed limits (WCP 4.1)
4.2. Decide on whether CCTV should be installed and how funded (BECP 4.2)	4.2. Review load restrictions and the requirements of local businesses sand discuss re-routing HGV's away from the Green (WCP 4.2)
4.3. Enforcement of current parking restrictions (BECP 4.3)	
4.4. Explore possibility of Community run Police Office (BECP 4.4)	
4.5. Ensure elderly residents have support (BECP 4.5)	
Environment, Housing and Development (BECP 5)	Environment, Housing and Development (WCP 5)
5.1. Create a Neighbourhood Plan (BECP 5.1)	5.1. Work with Parish and District councils to use existing housing stock before developing new housing and provide housing, which meets the needs of local people (WCP 5.1)
5.2. Support Slate Meadow as an Open space (BECP 5.2)	5.2. Preserve open spaces tom prevent urban sprawl and to enable villages such as Wooburn and Bourne End to keep their identities (WCP 5.2)
5.3. Improve frequency and quality of grass cutting (BECP 5.3)	5.3. Consider impact on already congested roads and local services such as doctor's surgeries and schools (WCP 5.3)
5.4. Educate public on their responsibilities for hedges and trees (BECP 5.4)	5.4. Support BE Residents Assoc and work with Parish Council to preserve Slate Meadow as a nature reserve and public open space (WCP 5.4)
5.5. Initiate anti-litter and anti-dog fouling campaigns (BECP 5.5)	5.5. Support local group implementing cycle path (WCP 5.5)

Bourne End Community Plan (BECP)	Wooburn Community Plan (WCP)
5.6. Produce local maps for walkers (BECP 5.6)	5.6. Liaise with BCC to improve frequency of grass and hedge cutting (WCP 5.6)
5.7. Provide more cycle paths (BECP 5.7)	5.7. Promote anti-dog fouling campaigns and liaise with Parish council to provide more litter bins (WCP 5.7)
5.8. Promote walking to schools campaigns (BECP 5.8)	5.8. Initiate anti-litter campaign and mobilise volunteers to litter pick (WCP 5.8)
5.9. Recommend to BCC safety improvements to the footpaths on Cores End Road near the bridge (BECP 5.9)	5.9. Investigate feasibility of fencing off the play area in Wooburn Park (WCP 5.9)
5.10.	5.10. Liaise with Schools to promote walking to School and anti-litter campaigns (WCP 5.10)
5.11.	5.11. Work with local conservation groups and the Parish council to improve provisions for wildlife and maintenance of riverbanks (WCP 5.11)

Wooburn & Bourne End Parish Council Neighbourhood Development Plan 5th Draft Appendix 2: Parish Statistics

1. Human Population

The Parish is one of the higher density parts of Buckinghamshire, as shown in the 2011 Census Population Density map on the next page and in the table below.

Census statistics for 2001 and 2011 show an increasing population density...

Wooburn & Bourne End	2001	2011	Increase
Population	10,184	10,500	3.10%
Households	4,489	4731	5.39%
Households per hectare	5.55	5.85	3.10%
Persons per hectare	12.59	12.98	5.39%

The majority of the population is crowded into the lower parts of the valleys of the rivers Wye and Thames, with the upper parts mainly green belt.

These valleys have an additional constraint on space for population growth...

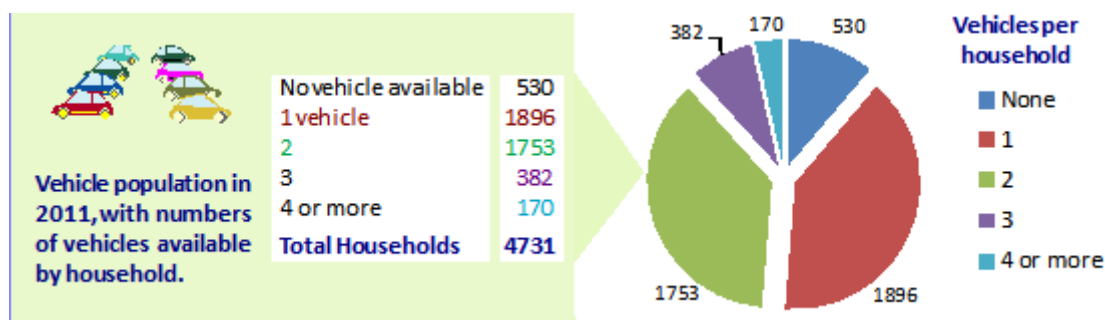
- Substantial areas are subject to varying levels of flood risk, as shown in the Flood Risk map on the next page, with the experiences of residents in recent years confirming the reality.

2. Vehicle Population

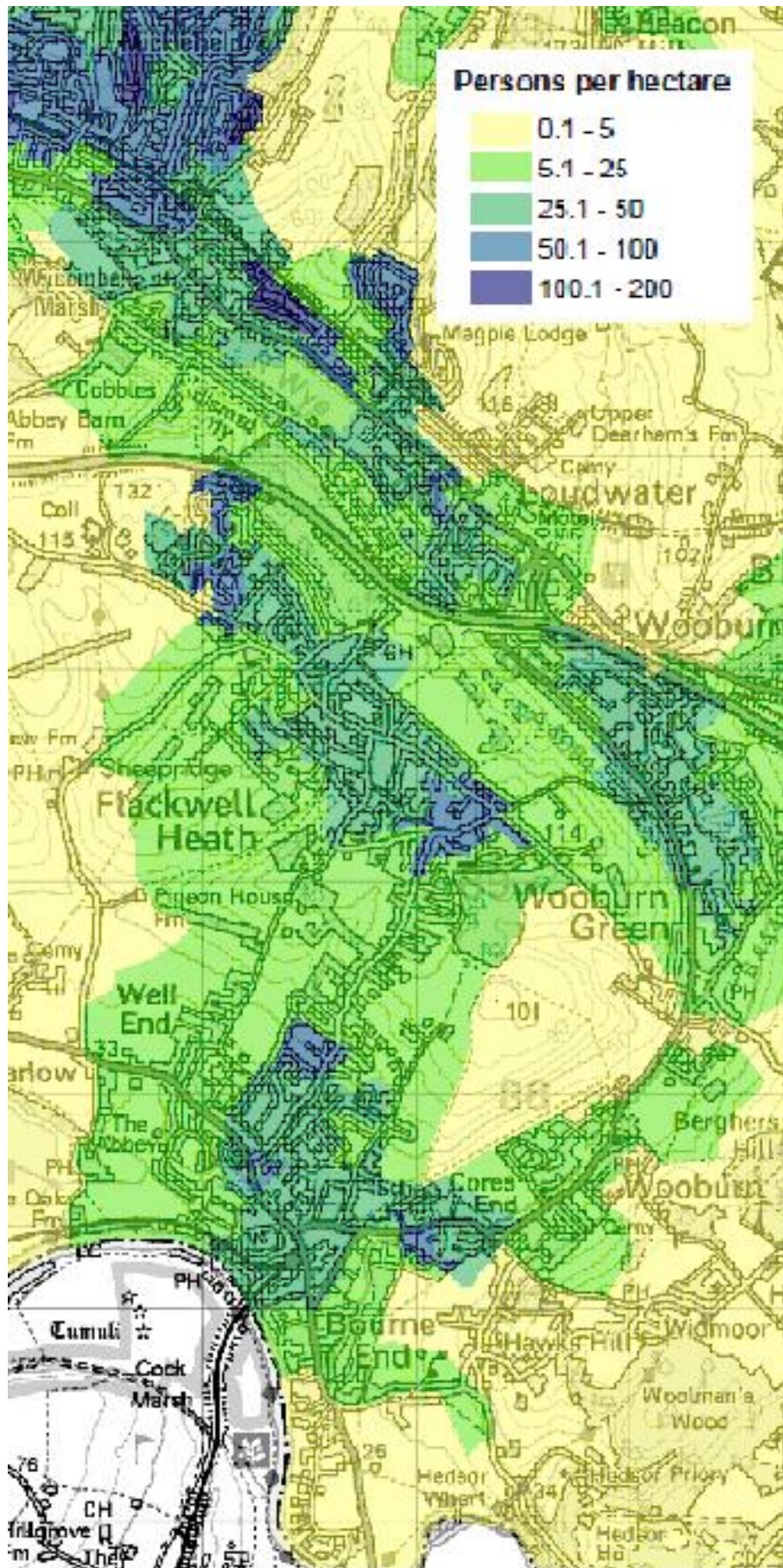
The 2011 Census recorded 7,300 Cars or Vans available across 4,731 households, with distribution as shown in the chart below.

A total of 88.9% of households had access to a car or van, with 49% having 2 or more.

- This illustrates the high level of competition for space in the Parish, with the average vehicles per household estimated to have continued to increase since 2011, creating serious parking difficulties (and disputes) for inhabitants and businesses in multiple areas with little or no space available to improve their situations.

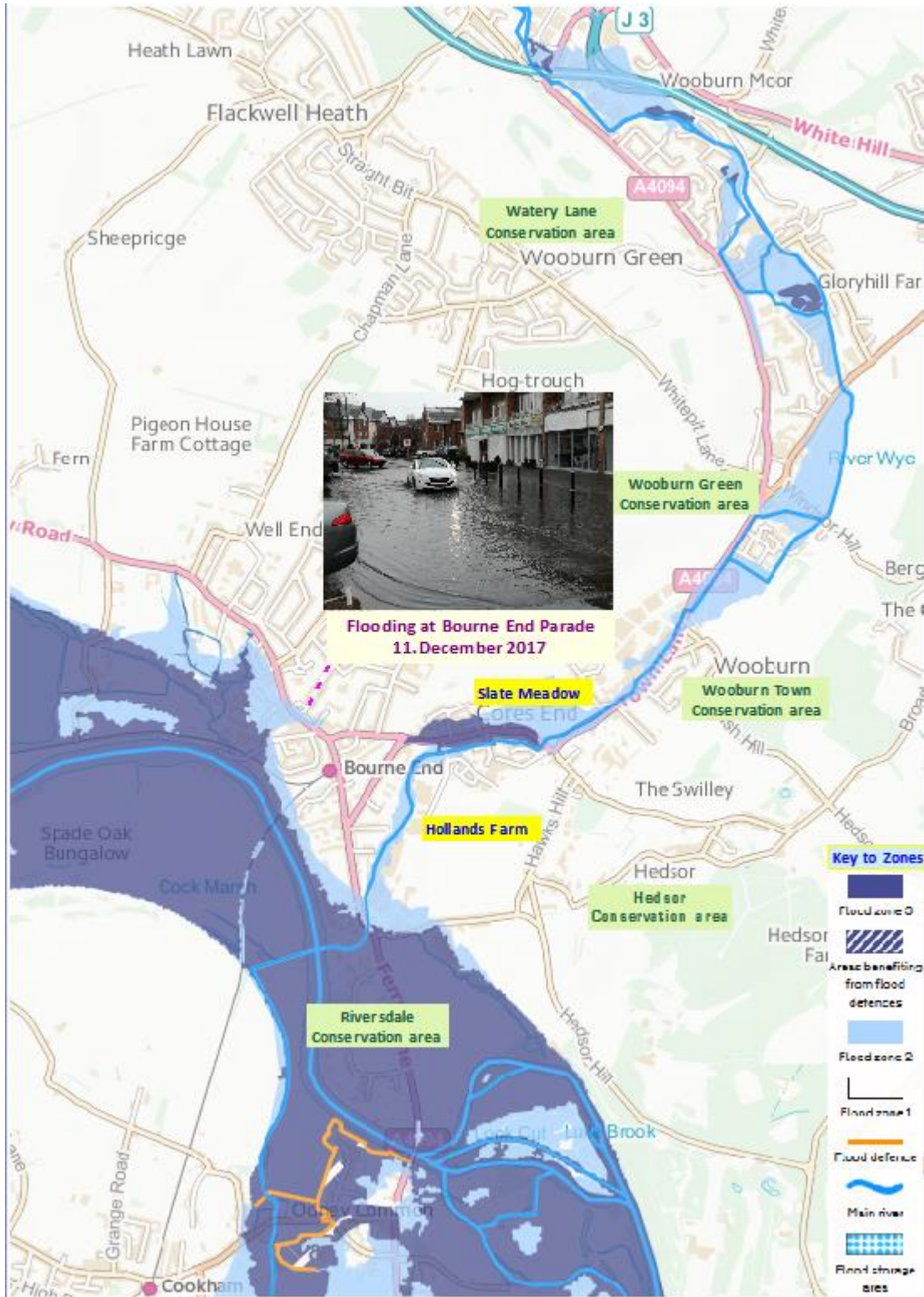


Census 2011 Population Density - Market Towns Focus Areas



2.1. Flooding risk to the Population

Flood Risk map of the Wooburn & Bourne End Parish, provided by the Flood-map-for-planning.service.gov.uk



3. Situations of the Human Population

3.1. Gender and Accommodation

Of the **10,792 people** in the Parish...

- **5,182 were male (48%)**
- **5,610 were female (52%).**

They lived...

- **10, 697 (99.1%) in a household**
- **95 (0.9%) in a communal establishment**

3.2. Economic activity

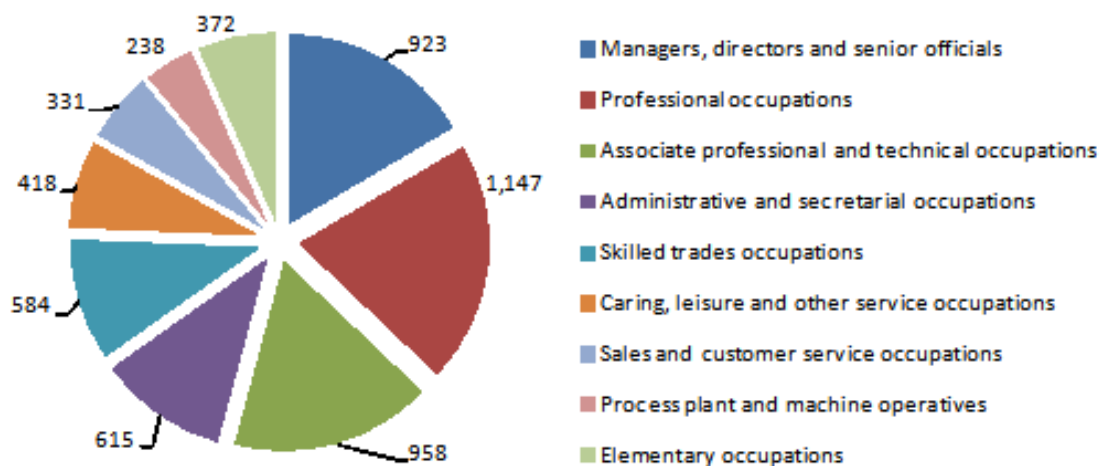
Of the **10,792 residents** in the Parish, **7,882 (73%)** in the age range **16 to 74** were categorised in the **ONS Crown Copyright Reserved [from Nomis on 21 March 2019]** table below.

Category	Residents in Category	Percentage of total
All usual residents aged 16 to 74	7,882	100.0
Economically active	5,853	74.3
In employment	5,410	68.6
Employee: Part-time	951	12.1
Employee: Full-time	3,365	42.7
Self-employed	1,094	13.9
Unemployed	226	2.9
Full-time student	217	2.8
Economically Inactive	2,029	25.7
Retired	1,181	15.0
Student (including full-time students)	255	3.2
Looking after home or family	324	4.1
Long-term sick or disabled	147	1.9
Other	122	1.5
Unemployed: Age 16 to 24	38	0.5
Unemployed: Age 50 to 74	60	0.8
Unemployed: Never worked	25	0.3
Long-term unemployed	82	1.0

3.3. Occupations

Of the **10,792 residents** in the Parish, **5,586 (51.8%)** were registered as employed, their occupations ranging across 9 categories as shown in the chart below.

The Census provided no figures for how many worked outside the Parish. However, a significant number commute, including to London, Slough, Heathrow, High Wycombe and other workplaces.



3.4. Industry Categories - overview

The 5,586 occupants registered as employed were engaged in 18 wide-ranging industries, with the three largest taking 37.7%...

1. "Wholesale & retail trade; repair of vehicles & motorcycles" 17.0%.
2. "Professional, scientific and technical activities" 10.6%.
3. "Information & Communication" 10.1%.

3.5. Household occupants - dependents

The 4,731 Households recorded in the 2011 Census included significant numbers with dependent occupants, as indicated in the table below...

Households with...

No adults in employment	1377	29.1%
With dependent children	108	2.3%
No dependent children	1269	26.8%
Dependent children: All ages	1269	27.1%
Age 0 to 4	506	10.7%
One person with long-term health problem or disability	968	20.5%
With dependent children	153	3.2%
No dependent children	815	17.2%

Substantial responsibilities for care exist as further indicated in the Health charts on the next page.

3.6. Health of the population

In 2011, of the 10,792 residents, 5,415 (51.8%) were in very good health, with 34.6% in good health, as shown in Chart 1.

Chart 2. highlights the 14.6% of residents with some health “limitations”.

Chart 3. shows the involvement of residents in providing unpaid care services to those in need.

- Of the 10,792 residents, 90% were recorded as not providing unpaid care services.

Chart 1: Overall health status of population

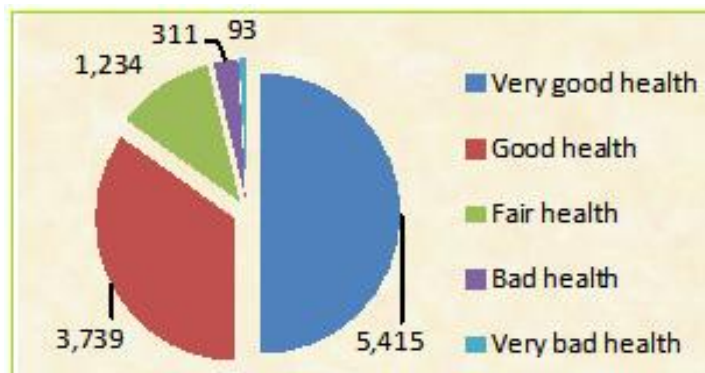


Chart 2: Health “limitations” of the population

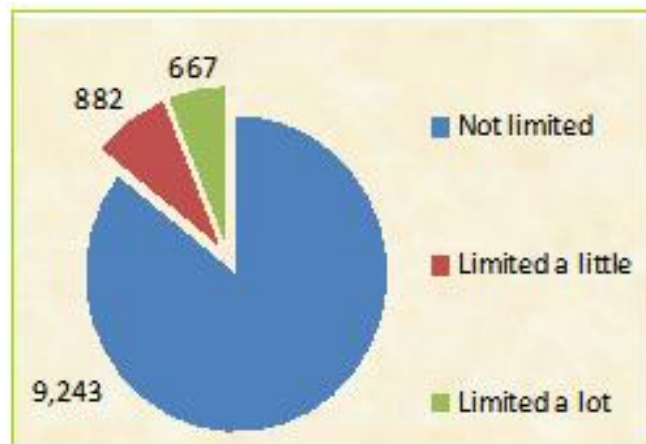
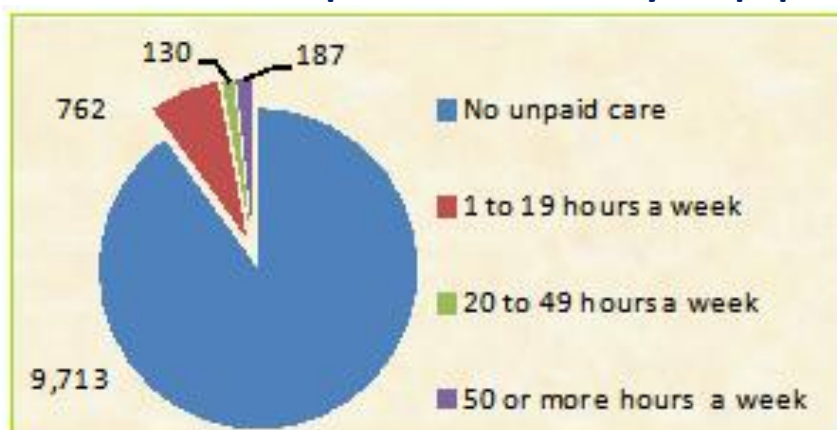
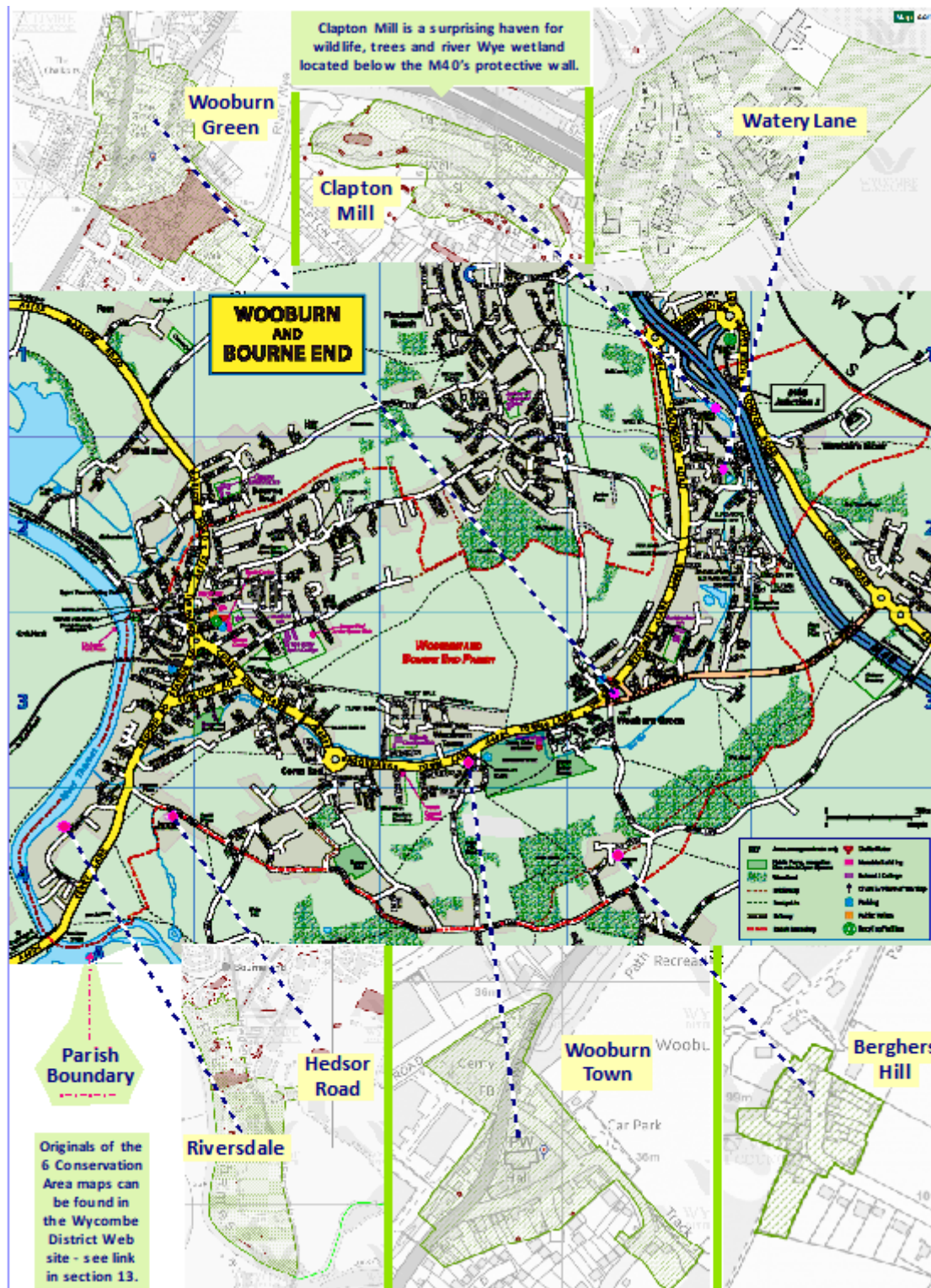


Chart 3: Provision of unpaid care services by the population



4. Conservation Areas

Six Conservation Areas are widely distributed across the Parish, as shown in the map below. They add to the quality of the Parish environment but present another limit on space available for developing housing, offices and car parks.



Larger originals of the 6 Parish Conservation Area maps can be found in the Wycombe area [website](#). Click on "Conservation areas within the Wycombe district" and select each area individually. Section 5. of the NDP provides links. The Parish website includes a larger scale main map in the Parish Guide.

Appendix 3

Examples of Wooburn Green & Bourne End Parking issues

The photos below support NDP Policy WBE/PD6, illustrating a few of the difficulties residents and businesses in the Parish experience daily as a result of space limitations and previous generations' planning when cars were not commonplace.



Cores End Road near brow of hill and opposite junction with Furlong Road



Parking on pavements in a narrow residential street



Parking on verge at Cores End Road junction with Furlong Road



Dangerous parking on corner of Claytons Meadow/Hedsor Road



Parking on pavements on A4094



Buses queuing outside Bourne End Station



Parking on green area in Blind Lane

Parking on pavement at Bourne End Parade



Parking on pavement on Furlong Road



Parking on Cherwell Green



Wakeman Road car park often full including evenings

